



# CELEBRATING 25 YEARS and counting of compassionate care

*“Choosing palliative care and/or hospice for your child does not mean giving up hope. It’s about living life to the fullest — the fullest and most comfortable life your child has in their remaining time. It’s not about adding time to your child’s life, but rather about adding life to your child’s time.”*

– Dr. Bob A. Archuleta  
Founder, Noah’s Children

“Noah’s Children has been the single stable foundation that keeps my feet on solid ground through all the ups and downs that we have faced. Noah’s is the thing, the person, the recovery that when all the air is sucked from the room, they are right there to remind me to breathe. I can’t imagine trying to navigate any of this life without them by our side.”

– Amanda Jones, mom of patient

## Services provided All services are available at no cost to families, regardless of ability to pay.

**Clinical Care Coordination:** At home or in the hospital, our interdisciplinary team works to plan and coordinate an effective, safe and comfort-driven plan of care.

**“I appreciate the care of communication with me as the mother on how I’m feeling and asking what they can do to make it easier as far as burn out, medication refills and communication with the physicians.”**

– The Mast Family

**Education:** Often families don’t know where to turn for answers after receiving their child’s diagnosis and many come to rely on the Internet as a source for information. The team offers a relational give-and-take of information that facilitates the integration of facts with confusing questions and feelings.

**“Nurses always have answers to all my questions. It doesn’t matter the time or day I call or text them; they’re always listening to me and helping with anything.”**

– Jackie, mother of patient

**Family and Sibling Support:** Our goal is to increase a family’s memories without imposing on them, so we offer both sibling and parent support groups in addition to 12 paid counseling sessions by a counselor of their choice.

• **Sibshops:** Studies have shown, and siblings of special needs children, have reported depression, isolation, fear, lack of support and at times resentment towards parents and siblings. The Sibshops are offered quarterly and use a national curriculum providing siblings with peer support and information in a lively, recreational setting.

• **Parent Support Group:** The group is offered for nine months with the last session at a donor-supported brunch the week before Mother’s Day. Collaborating with parents on topics and offering creative activities to support the grief journey guides the continued development of this group.

**“I’ve learned more of my child’s diagnosis and learned the different ways I can explain to my other children what’s wrong with their sibling. They really try their hardest to make this journey stress free and are doing a wonderful job.”**

– Katie

**Family Assistance Program:** This program provides aid for financial challenges, needs and expenses incurred due to supporting the patient living in the home.

**“The financial aid services are such a precious blessing because financially we’re struggling. It’s very financially exhausting to have a child with significant needs for many years. To have grocery store cards and gas cards for the many miles on the road make such a difference.”**

– Anonymous

**Family Events:** Family events are designed with the goal of providing normalcy, connection, and fun in an accommodating community environment with other families sharing similar experiences, needs, and understanding.

Programs include:

- Holiday Party
- Mother’s Day and Father’s Day Program
- Parents’ Night Out
- Pool Party
- Sibling Day Out
- Summer Outings
- Back-to-School Event

**“We do not get out much, so we try to take advantage of all the parents and family events. Noah’s Children does a great job at thinking of EVERYTHING and making each event special down to the smallest details.”**

– Mother of child with lissencephaly

**Grief and Bereavement Support:** Children and adults often are overwhelmed by serious illness or loss and may exhibit varying degrees of confusion, anxiety and helplessness. We deliver bereavement services through a companioning model.

**“The bereavement program and services have provided counseling to everyone in my family. Without this level of support, I don’t know where my family would be.”**

– Anonymous



**Holiday and Birthday Support:** Birthdays and holidays are milestones celebrated with items purchased from the wish lists of patients, families and siblings.

Programs include:

- Birthday Club
- Easter Baskets
- Holiday Adoption
- Thanksgiving Meals
- Valentine’s Day

**“My daughter was all smiles when she received not only a mail package in her name but a wrapped gift from her wish list.”**

– Mother of a patient

**Hospital Boxes:** Families with medically fragile children have frequent medical appointments, hospital visits and extended hospital stays. These boxes offer personal and self-care items, gift cards for meals and an encouraging card from our Kids Helping Kids program.

**“The hospital boxes are perfect for unexpected stays. I needed a way to take notes and there was a small notebook in there. The patient LOVES word-find puzzles and that was in there, too. The bag was full of much needed supplies and goodies that kept us entertained and I can’t tell you how much I appreciate it all.”**

– Amy

**Kids Helping Kids:** The purpose of this program is to engage the creativity and compassion of children and spread awareness of Noah’s Children’s mission in the community. The program includes youth volunteering, service learning, and the Kids Helping Kids art project.

**“For our service learning activity with the Kids Helping Kids Program, we had the privilege of not only developing leadership skills but organizing a hat drive, treat sale, get well card writing campaign drive and hosting a spirit night at a local restaurant to raise funds and awareness for Noah’s Children.”**

– Moody Middle School students

**Meals:** After a long day of doctor visits, homework, housework, caring for children and living in rural areas, there is little to no energy or resources to prepare a nutritious meal. The meals are provided monthly with catered meals and store-bought meals selected by families.

**“The meals are super helpful for those times when I just can’t pull it together.”**

– Anonymous

**Music Therapy:** Clinical and evidence-based use of music interventions address a variety of healthcare and educational goals to promote wellness, alleviate pain, express feelings, improve communication and promote physical rehabilitation. In-home or virtual music therapy is offered to patients.

**“Music therapy is a Godsend! I’ve seen my child grow so much with this service.”**

– Elizabeth

**Perinatal Palliative Care:** We serve parents whose unborn child has been diagnosed with a life-threatening condition.

**“We had never been through anything like this before, so we were completely unprepared. Noah’s Children came in and educated us about the disease, the statistics, the prognosis and what to expect. Not knowing what would happen was incredibly difficult. But having the birth plan Noah’s developed gave us a roadmap so we would know what to do.”**

– Mother of an unborn child diagnosed with anencephaly

**Social Work:** Our social work services aim to reduce stress and enhance a family’s quality of life. Just as no two families or situations are the same, the social services offered are custom tailored to each family’s individual needs.

**“Assisting us with navigating the Social Security system has been super helpful.”**

– Anonymous

**Spiritual Care:** Living with a seriously ill child brings out the spiritual struggles and strengths of all involved — patients, family, friends and even the staff. We provide spiritual care that is respectful of the families’ personal, cultural, and spiritual beliefs and practices.

**“It’s great to have spiritual support available when needed. The Chaplain has also been instrumental in connecting us with other spiritual support resources.”**

– Anonymous



For more details on these programs, please visit [noahschildren.org](http://noahschildren.org)



## Through the years

Noah's Children has been serving Central Virginia families with seriously ill children since 1997.

1997

A local kindergarten class creates a Noah's Ark collage. Dr. Bob Archuleta purchases the art for his office. He receives so many compliments that he makes prints of the artwork. At a meet-the-artist event, Dr. Archuleta gives each child a print and asks what he should do with the proceeds of selling prints. **The children ask him to help sick and dying children.** Dr. Archuleta begins Noah's Children.



1999

First Lady Roxane Gilmore, former First Lady Jeanie Bailles and Patricia Cornwell are honorary guests at the book release ceremony for *Serafina's Silver Web*, which was illustrated and published by Noah's Children.

The Richmond Academy of Medicine presents Dr. Archuleta the Distinguished Service Award for Ministry to Children for founding Noah's Children.

2000

The American Academy of Pediatrics, Virginia Chapter, presents Dr. Archuleta the President's Award for vision, dreams and dedication in founding Noah's Children.

2007

Noah's Children becomes a program of Bon Secours Richmond Health System.

2005

Noah's Children partnered with the Instructive Visiting Nurses Association (IVNA).

2003

Child poet Mattie Stepanek, who was the author of six poetry books and friend of Oprah Winfrey and Jimmy Carter, and his mother, author Jeni Stepanek, served as honorary co-chairs of the annual gala.

2017

Dr. Bob Archuleta becomes Richmond Times-Dispatch Person of the Year.

2001

600+ individuals participate in illness and bereavement support services through community outreach support groups.

Dr. Joseph and April Niamtu, along with Hall of Fame quarterback Jim Kelly, serve as chairs for the annual gala.

2008

Dr. Bob Archuleta wins the Elizabeth Durney award for hospice care.

2012

First Noah's Children bereavement camp held. Jenna Bush Hager was the featured speaker at the annual gala. Dr. Archuleta becomes Certified by the American Board of Pediatrics and the American Academy of Hospice and Palliative Medicine.

2015

Dr. Archuleta is inducted as a Fellow of the American Academy of Hospice and Palliative Medicine.

2019

Dr. Bob Archuleta retires, and Dr. Kelly Lastrapes becomes Noah's Children Medical Director.

2021

Noah's Children hires a full-time music therapist.

2022

Noah's Children forms the first Bereavement Parent Support Group.

2023

Noah's Children hires second Nurse Practitioner.

## Future plans for Noah's Children:

- Grow the team to meet demands of current census.
- Grow program by one of the following metrics: geographically (extending our current service area), by age inclusion (serving medically complex young adults) or other criteria.
- Develop a creative therapies program (i.e., massage therapy and other therapies that benefit the families).
- Possible additional team roles: Child Life Specialist, Psychologist
- Provide respite services for families.

## \$2.5M for 25 Endowment Campaign

### What is the goal of the endowment?

To mark the 25th anniversary of Noah's Children, and to honor the children and families who have been supported and cared for through this remarkable program, the Noah's Children Endowment has been established. Our intention is to raise \$2.5 million over the next 24 months. A grateful family has seeded the endowment with a \$100,000 gift in memory of their loved one, Hannah Humphris, and in honor of Dr. Bob Archuleta.

Financial support is currently provided to Noah's Children through both philanthropy and the Bon Secours Richmond Health System. Philanthropic support comes from grateful families, memorial gifts, individuals, corporations and Bon Secours employees, as well as a portion of funds raised at the annual Children's Hope Gala. The Bon Secours Richmond Health System supports operational costs such as rent and many staff salaries and has done so since Noah's Children became part of the health system in 2007.

### How will an endowment help Noah's Children?

Bon Secours supports a variety of programs such as Noah's Children to ensure the Richmond community has access to services otherwise not available, relying on philanthropic support to sustain some of the higher costs associated with these programs.

An endowed fund will provide a stable base of funds and will create a permanent resource that makes a difference today and for generations to come.

The earnings from the endowment will be used to provide vital support of Noah's Children to grow the program in a variety of ways, including increased staff and additional programs and therapies. In order to grow the program both geographically as well as number of families served, the team and programs need to match the needs of the community.

### How does an endowment work at the Bon Secours Richmond Foundation?

An endowment is a fund of the Bon Secours Richmond Foundation that is not wholly expendable by the Foundation on a current basis. The fund is held in perpetuity to support services and programs within the Richmond Market based on the wishes of donors, in this case Noah's Children. Endowment funds are invested to assure that funds grow over time, creating sustainability, and only a portion (typically 3.5 to 5.0%) of the appreciated fund is distributed on an annual basis.

Bon Secours Richmond Foundation has administered endowment funds since its inception in 1982. No administration fees are currently associated with our endowments.

### Endowment scenarios

Once the endowment is established through philanthropy, annual distributions will be made to support Noah's Children. The annual distributions will be determined using the average endowment balance at the end of the previous twelve calendar quarters. To illustrate, the following are estimated distribution amounts at different endowment balance levels that would secure the ongoing legacy of Noah's Children:

Endowment fund goal amount	Anticipated annual payout (3.5 to 5% return)
\$1,000,000	\$35,000 to \$50,000
\$2,500,000	\$87,500 to \$125,000
\$5,000,000	\$175,000 to \$250,000

## Noah's Children Parent Support Group

When called to provide care for children with life-threatening or life-limiting illness, loss is part of the process. When the approach to care is holistic and compassionate, resources to manage loss must also be part of the process.

The Noah's Children Bereavement Coordinator discovered there was robust support in the community for perinatal loss; however, the support for child loss was limited. Noah's Children started their first Parent Bereavement Support Group in September 2022. Designed from parental input, the curriculum provided a safe environment to share stories of loss and to receive support and validation for the grief journey. Topics included: Accepting the Reality of Your Loss by Telling Your Story, Hugs & Hurts, The Impact of Response of Others, Working with Difficult Feelings, Journaling and Creative Imagery, Resilience on the Grief Journey, Living

Fully While Honoring Loved Ones and the Impact of Grief on Relationships.

Through monthly Zoom meetings, the established format allowed participants to connect with each other, creating a community of support.

Attendance was consistently above 90%, and the number of participants increased throughout the sessions. Parents shared the group was helpful, needed and connecting with other grieving parents helped to decrease their sense of isolation.

The group was offered for nine months beginning in September with the last session at a donor support brunch at the Jefferson Hotel the week before Mother's Day. Collaborating with parents on topics and offering creative activities to support the grief journey will guide the continued development of this group.

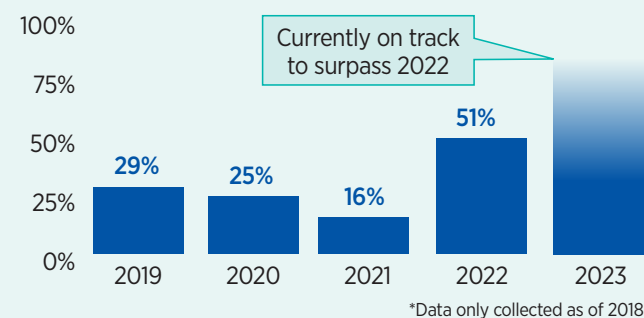
## 1997 Staff

- Chaplain
- Nurse
- Social Worker
- Volunteer Coordinator

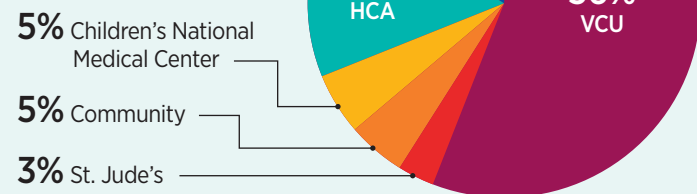
## 2023 Staff

- Bereavement Coordinator
- Chaplain
- Community Liaison
- Medical Director
- Music Therapist
- Nurse Practitioners (two)
- Nurses (three full-time, one part-time)
- Office Coordinator
- Practice Manager
- Social Workers (one full-time, one PRN)

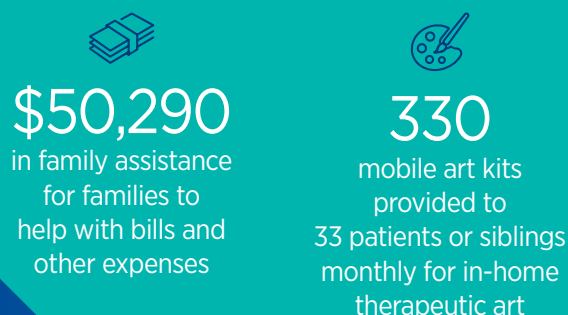
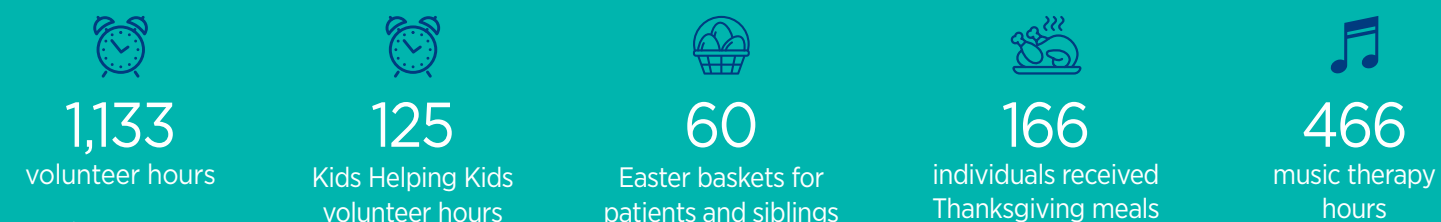
## Program growth



## 2022 referral sources



## By the numbers 2022



## Kelly's Korner

2022 presented ample opportunity for the Noah's Children team to shine, as the referrals to our program increased by almost 70% and admissions doubled. Each discipline stepped up to meet our families' evolving needs, both those new to the program as well as those that have been with us for some time. Philanthropic funding allowed us to ease some of the financial burden of mental health services for our families, which became critically important post-pandemic. None of this work would be possible without the unwavering support of Bon Secours Richmond Health System as well as our dedicated donors. Thank you!

Dr. Kelly K. Lastrapes | Medical Director, Noah's Children



## Giving Life

In February 2016, at 26 weeks gestation, Hannah Lands went for her follow-up appointment for her low-lying placenta. Hannah received the news her placenta was fine, but she also received the devastating news that her baby's brain was not.

The doctors noticed several calcifications consistent with moms infected with toxoplasmosis, a parasite found in cats or contaminated food, or cytomegalovirus, a virus frequently contracted through contact with babies and small children.

According to the Centers for Disease Control (CDC), about 0.6% of children born in the United States are infected with cytomegalovirus. Most affected babies present without symptoms at birth, 20% grow to develop symptoms as they grow and 10% have signs of the infection at birth. Of that 10%, 90% have serious complications including hearing loss, visual impairment, epilepsy and intellectual disabilities.

Logan was born May 12, 2016. For a year the family endured Logan's constant, inconsolable crying and vomiting after every meal. In November 2017, the Lands Family received a palliative care consultation from their primary care physician who recognized that Logan's symptoms were not being addressed.

The Lands family was referred to Noah's Children.

Hannah said, "we knew we were at the end of our rope and if something didn't change, we were going to lose him soon, from the constant vomiting alone. We were just looking for some relief for our child, but what our family experienced was so much more."

The Lands family felt a sense of relief as their one-on-one consultation with a Noah's Children nurse was the first time they felt heard in a year. During the intake the nurse visited the home, saw firsthand what they encountered and contacted the then Medical Director, Dr. Bob Archuleta to evaluate Logan.

According to Hannah, "that one interaction ultimately gave Logan three years that we would not have otherwise had with him, and we had absolutely no reservation with bringing Noah's Children palliative care onto Logan's team."

**"We were just looking for some relief for our child, but what our family experienced was so much more."**

- Hannah Lands

For Hannah and Michael, Dr. Kelly Lastrapes, the new Medical Director, helped navigate the landscape. She, along with their nurse, Mary, demonstrated the knowledge and care of skilled medical professionals, including the emotional intelligence to deliver bad news with empathy and understanding.

Dr. Lastrapes also explained Logan's illness in layman's terms. Although Hannah works in the medical field, Michael does not. Dr. Lastrapes helped them understand the illness, what Logan was experiencing and how to ask the doctors better questions. With palliative care support and services, Logan's illness was more manageable.

Hannah spoke of Noah's Children supporting the entire family with monthly meals, events, financial assistance to cover costs their insurance would not and bringing care packages during



Logan Lands and family.

long hospital stays. The Lands family lives about an hour from the hospital where Logan received care. The care packages included gas cards and other necessities they didn't realize they needed. Hannah also shared her gratitude for Noah's Children giving Christmas presents to Logan's siblings.

Eventually, Logan began to decline, and Hannah reported the transition from palliative care to hospice as seamless. Noah's Children's hospice team was in contact with them daily. The bereavement coordinator worked with Logan's siblings to make memory crafts, and the chaplain checked in frequently and offered emotional and spiritual support.

After Logan passed, Hannah was surprised that Noah's Children continued to care for their family. They receive grief support from the bereavement coordinator, have shared in a memorial service to honor and remember Logan and other children and joined Noah's Children's first Bereavement Parent Support Group that started in September 2022. Hannah and Michael have met other parents who lost children to terminal illnesses. Knowing they are not alone and have support through the entire journey has been extremely beneficial.

Hannah feels blessed to share Logan's story with other families, as well as the medical profession. She wants other families to know that palliative care is the best thing that ever happened to their family. "It's not end-of-the-road care, but rather something that's designed to help patients and their families navigate the hardest times they've ever had to endure, physically, mentally and emotionally."

She encourages families through these words:

*Your child's life is worthwhile. This journey is hard, and there are many days you feel like you can't keep going on, and yet you do, because your son or daughter is worth it, and because their life makes a difference. Our son lived for five years, and while many people try to avoid families with special needs or medically fragile kids, there are countless more that our son's life impacted and is still impacting today.*

Hannah gives a big thank you to Noah's Children staff, volunteers and donors. She hopes that everyone who contributes to Noah's Children truly understands how much their work and contributions mean to the families. "Noah's Children gave us our life back."



## About Noah's Children

In 1997, Dr. Bob Archuleta, a Richmond-based pediatrician, founded Noah's Children, Central Virginia's only pediatric palliative care and hospice program.

The holistic, interdisciplinary home-based approach of Noah's Children encompasses the compassionate needs of infants and children, up to age 18, diagnosed with a life-threatening or life limiting illness. The program provides for the physical, emotional, social and spiritual needs of our patients and their families. Pediatricians, neonatal and pediatric care units from all major health systems in Central Virginia refer patients to Noah's Children and its services.

## Ways to support

**Mail:** Mail a check made payable to **Bon Secours Richmond Health Care Foundation** with "Noah's Children Endowment" in the memo to:

Bon Secours Richmond Health Care Foundation  
5855 Bremo Road, Suite 100  
Richmond, VA 23226

**Online:** Give a one-time or recurring gift through the Bon Secours Richmond Health Care Foundation at [givebsmh.org/Richmond](https://givebsmh.org/Richmond). Please specify "Noah's Children Endowment" under designation.

**Pledge:** By paying in installments over a period of time, possibly up to *five* years, you may be able to make a larger gift commitment now.

**Matching gift:** Fill out a form with your company if they participate in a matching gift program.

**Planned gift:** Consider giving through your estate plans, a charitable gift annuity, stocks or life insurance and retirement account designations. Review details about planned giving options on our website at [givebsmh.org/Richmond](https://givebsmh.org/Richmond).

Scan the QR code to donate today.



## Contact

Stefanie Smith, Senior Gift Officer  
Bon Secours Richmond Health Care Foundation  
[Stefanie\\_Smith@bshsi.org](mailto:Stefanie_Smith@bshsi.org) | (o) 804-287-7700 | (c) 703-850-9346

