



WHAT ARE THE URGENT NEEDS IN GRADUATE MEDICAL EDUCATION?

- **Fewer medical school graduates and increased physician demand create a growing physician shortage.** Greenville will face a severe shortage of physicians due to the area's growth, aging population, and the impending retirements of older physicians.
- **Maintaining patient access to care is critical, and accredited residency programs are the only pathway to training and creating more doctors for our community.** Graduate Medical Education (GME) helps resident physicians learn to provide patients with the highest quality care.
- **Soon, doctor appointment wait times may take months, even for established patients.** As Greenville grows, the population ages, and chronic diseases increase, we will need more highly skilled physicians to provide care.
- **Attracting top talent has become incredibly competitive.** We intend to attract and retain our St. Francis program's best graduate medical residents so they continue to work and live in our community.
- **Philanthropic investment is more critical than ever.** While the federal government has subsidized a significant portion of the cost of GME since 1965 while acknowledging the value of training physicians for our communities, Congress repeatedly considers cuts and caps to GME. This lack of funding severely limits physician training opportunities. We must ask the community for their philanthropic support.

WHAT IS OUR CURRENT STATE?

We:

- **Plan to bring vital, life-saving expertise to our region.** Today, we do not have a Graduate Medical Education program. However, we plan to develop a new generation of local doctors aligned with our mission and values.
- **Are determined to invest in training doctors to meet the needs of Greenville's growing population.** We have been studying best practices and developing educational models better to inform decisions about the training and support learners will need to build clinical competencies at every stage of education, training, and practice.
- **Are committed to providing well-rounded training in a faith-based, culturally diverse environment.** The looming physician shortages will create barriers to care, and the challenge of having enough doctors to serve our community is critical.
- **Celebrate our 90th year.** We have served Greenville since February 1932, when the Franciscan Sisters of the Poor acquired the downtown hospital from the Salvation Army. Historically, philanthropy has significantly impacted patient care, community health, current operations, and other institutional priorities. Now we must turn to our community again today.



“Amid growing shortage, we must produce more doctors in the Upstate. Our GME program will provide teaching, promote research knowledge, shape attitudes, and provide skills critical to becoming future leaders in medicine who are worthy of our community's trust.”

- Dr. Bruce Swords, Chief Medical Officer

HOW ARE WE ADDRESSING THE URGENT NEEDS?

We will:

- **Invest in training doctors so patients can access the care they need.** We are determined to increase the number of practicing physicians, ensuring patient care delivery now and in the future.
- **Launch new medical residencies in Internal Medicine and Family Medicine.** We will invest significantly in a new Graduate Medical Education program that will produce dozens of new primary care physicians in the coming years who are expected to stay in the Upstate area while building their practices.
- **Create spaces that support superior Graduate Medical Education.** We will use established areas and invest in new GME working space, including teaching and conference rooms, lounge space, resident call rooms, computers, a simulation lab, and additional clinical space in a designated hospital section.
- **Advance the highest quality education, combining teaching, clinical service, safe patient care, and research.** We will balance the high standards of academic rigor with respect for life outside of medicine by teaching less quantifiable skills such as compassion, communication, interprofessional collaboration, faith-based integration, and capacity for practice-based learning.
- **Engage our community to join us in making these critical investments.** Together, we must invest in growing new physicians with the tools they need to meet the challenges of 21st-century practice. We hope to inspire generosity, commitment, and joyful giving by inviting the community to complement our investment.

HOW IS BON SECOURS ST. FRANCIS DIFFERENT?

As a faith-based and patient-centered organization, Bon Secours exists to enhance the health and well-being of all people in mind, body, and spirit through exceptional patient care. We:

- **See Bon Secours St. Francis as a special place where graduate medical resident physicians can prepare for a bright future.** We have multiple locations, comprehensive specialties and services, quality facilities and equipment, and dedicated and skilled staff.
- **Are focusing on viable ways to ensure medical resident physicians have the opportunity and support to become great practicing doctors.**
- **Appreciate that it is essential to develop future doctors guided by the principles of a faith-based worldview.** We want to grow future physicians who become knowledgeable and competent servants for their patients and society.
- **Aspire to train students, residents, and practicing physicians at every continuum stage in strategies to strengthen their resilience.** We recognize the alarmingly high rates of isolation, depression, burnout, and suicide among caregivers in recent years.
- **Further our mission and vision.** We are guided by values rooted in and arising from St. Francis's rich faith-based history, traditions, and culture. For physicians with a call to serve, Bon Secours St. Francis will offer opportunities to learn, grow and develop that only a system of its reach and faith-based mission can provide.

WHAT IS OUR FUNDRAISING FOCUS?

Our Foundation's role is to raise money that will most impact fulfilling the institutional mission and goals. Therefore, the philanthropic investment raised to benefit our graduate medical education program will focus on four significant needs to maximize our start-up efforts:

1. **Launching the new graduate medical education programs.** We seek philanthropy to help us launch a new GME program, St. Francis' first accredited resident physician training program. Residency training occurs after three years of medical school in a hospital or clinical setting. We are organizing our program to provide high-quality training to talented and motivated resident physicians. We will train those caring for individuals and families of all ages, genders, and diseases. We will start with eight residents in Family medicine training to provide comprehensive healthcare from birth to end-of-life care. We will also educate experts in diagnosing and treating chronic illness, health promotion, and disease prevention, starting with twelve residents in Internal Medicine.
2. **Building out new educational and clinical teaching spaces.** We seek philanthropy to help create spaces that support superior Graduate Medical Education. We plan to use established areas and invest in new GME working space, including teaching and conference rooms, lounge and resident call rooms, computers, a simulation lab, and additional working space in a designated hospital section.
3. **Creating scholarships and fellowships for new residents.** We plan to attract some of the best young physicians in the nation. Scholarships and fellowships for graduate medical education physicians subsidize costs related to their graduate school experience. These scholarships make graduate medical education more attainable, reducing over-reliance on student loans. Scholarships encourage applications from the best of the best.
4. **Advancing innovative teaching.** We seek philanthropy to help us build our culture of education and learning on a foundation of collaboration that integrates rigorous academics and clinical experiences across disciplines throughout our organization. We know we must keep pace with the constantly changing landscape of health care with innovation in patient care and education delivery and strike a balance between outstanding resident education, abundant clinical experience, and high-quality patient care.

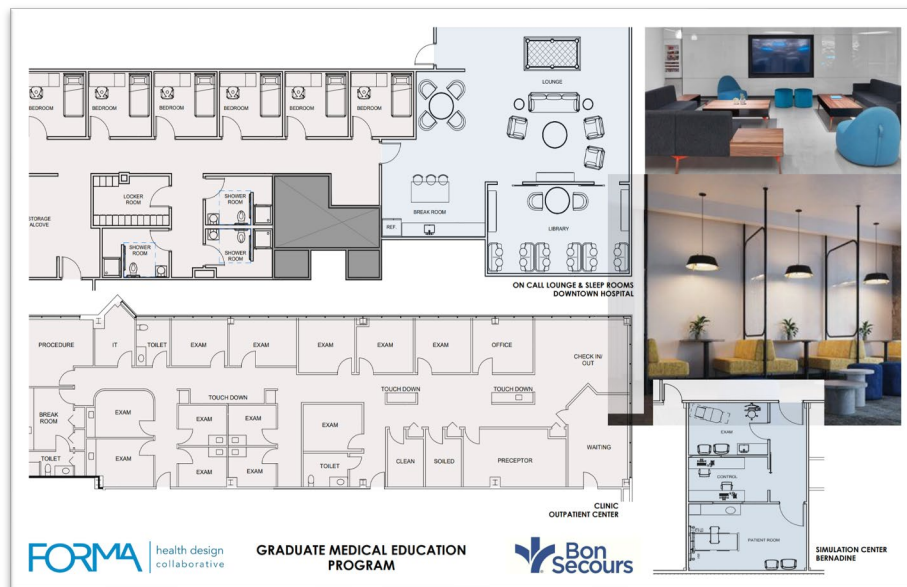


Photo: Artist rendering of the floor plan and GME student area.

HOW CAN YOU HELP?

Philanthropy is essential. A powerful discriminator between the good and the exceptional GME programs is the availability of resources to move in new directions rapidly and seamlessly. Expendable funds, scholarships, and endowments will allow us to attract the best students, recruit and retain the best clinical faculty, and support innovative training.

Your generosity can:

1. Fund the creation of graduate medical education facilities and learning spaces.
2. Help provide an environment where the best and brightest medical professionals can thrive.
3. Sponsor medical resident scholarships and fellowships that support our best and brightest medical residents and trainees and welcome and encourage applicants eager to engage in faith-based patient care.
4. Support outstanding clinical teachers and endow positions for clinical faculty so we can accelerate the efforts of our most accomplished and promising faculty physicians.
5. Back a caring culture and promote an environment that values providing excellent training and education as much as resident well-being.

Although federal dollars have been and will continue to be significant, community support and philanthropic investment are a fundamental part of the equation. We invite you to impact a healthier future directly by helping us build a brighter future for medicine and ensuring our community has enough physicians to provide the care you need when you need it.

WHO DO YOU CONTACT FOR MORE INFORMATION?

Bon Secours St Francis Health System Foundation

One St. Francis Drive
Greenville, SC 29601
(864) 255-1040

Erik Whaley, CFRE

President
Erik_Whaley@bshsi.org

Reed Cole

Senior Gift Officer
Reed_Cole@bshsi.org



WHAT ARE THE NAMING OPPORTUNITIES?

BESTOWING RECOGNITION FOR EXCEPTIONAL PHILANTHROPY

Make a gift that links your name, or that of a friend or loved one, with the compassionate care that makes Bon Secours St. Francis such a remarkable organization.

The opportunity to name a space, program, or scholarship has a powerful impact.

We are delighted to share with you the list below of naming opportunities. It is updated regularly.

- **\$500,000** - Graduate Medical Education Resident Suite
- **\$75,000** - GME Outpatient Clinic
- **\$50,000** – GME Program Endowment Fund (Family Med./Internal Med.)
- **\$25,000** - Pathways to Success Scholarships (multiple available)
- **\$25,000** - Clinical Faculty Support Endowment
- **\$15,000** – GME Simulation Center at Bernadine
- **\$10,000** - GME Outpatient Clinic Waiting Room
- **\$10,000** – Library, GME Resident Lounge
- **\$7,500** – Break Room, GME Resident Lounge
- **\$5,000** – GME Resident Sleep Room (6 available)